

### 11698-4 SINGLE LEVER RECESSED TRIM

#### BEFORE YOU BEGIN

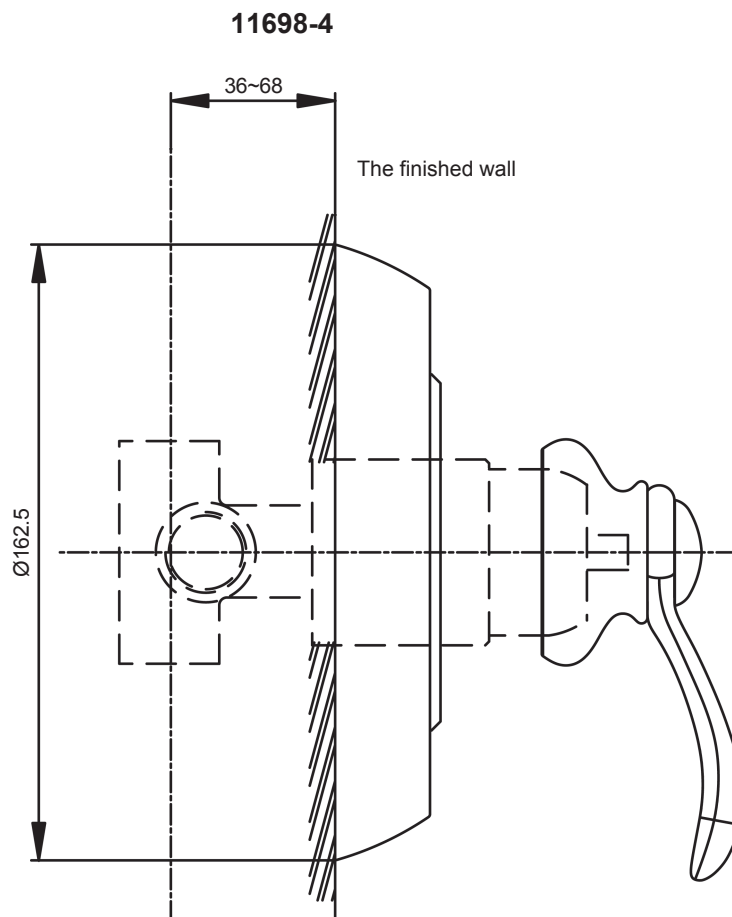
All information is based on the latest product information available at the time of publication. Kohler Co. reserves the right to make changes in product characteristics, packaging, or availability at any time without notice.

Please leave these instructions for the consumer. They contain important information.

#### NOTES:

1. Do not remove the plaster guard from the valve body until instructed to.
2. Install valve 16587 according to the rough-in dimensions of 11698-4.

#### ROUGH-IN DIMENSIONS

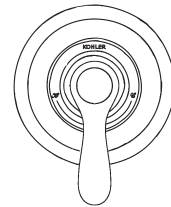
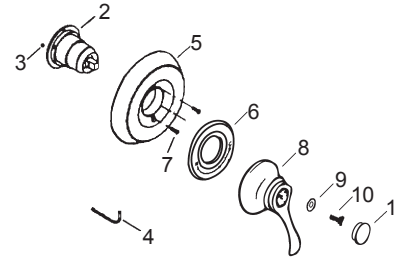


## INSTALLATION

**Note:** Install valve 16587 according to the rough-in dimensions of 11698-4.

Remove the plastic guard after completed the finished wall.

Make sure that two holes in collar ring(2) are vertically oriented. Use hex wrench(4) provided, tighten three setscrews(3) securing collar ring to body so that the ring is tight to the valve body. Install faceplate(5) by tightening two screws(7) into collar ring. Install the cover(6) onto the escutcheon. Put the two bulges of the cover into the indentations of the escutcheon and then screw the cover so that it aligns with the escutcheon. Note: ① To avoid destroying the bulges, do not over screw it. ② The position after installation as shown in the drawing.



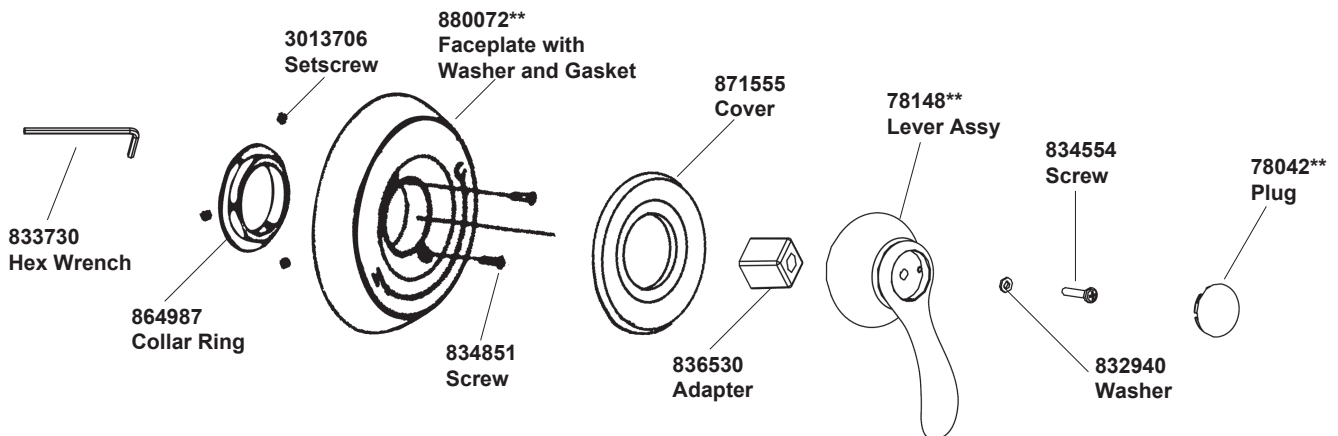
Install handle(8): Slide handle over valve stem with handle pointing down. Slide the washer(9) onto the setscrew (10). Thread the setscrew into the hole of the handle top. Press plug button(1) in place.

## CLEANING INSTRUCTIONS

All finishes: Clean the finish with mild soap and warm water. Wipe entire surface completely dry with clean soft cloth. Many cleaners may contain chemicals, such as ammonia, chlorine, toilet cleaner etc. which could adversely affect the finish and are not recommended for cleaning.

Do not use abrasive cleaners or solvents on Kohler faucets and fittings.

## SERVICE PARTS



\*\*Color code must be specified when ordering